

## Sothys, the professional difference

DIAGNOSIS OF THE SKIN → PERSONALIZED ADVICE → MADE TO ORDER PRESCRIPTION

INTENSIVE TREATMENTS + INTENSIVE SERUMS + HOME CARE

GLOBAL PROGRAMME, OPTIMAL EFFICIENCY

## Digi-Esthetique® at the heart of Sothys programmes

Sothys exclusive Digi-Esthetique® method, combining finger pressure, modelling and drainage, reinforces the efficiency of your treatment and provides well being for your mind and body... Be immersed in a state of deep relaxation and awaken totally revitalized as the circulation of energies improves and the active products are assimilated.



## CONTENTS

Sothys,  
the professional difference... P. 2-3  
Your skin is an asset... P. 4-5

### FACE CARE

cleanse P. 8-9  
maintain P. 10-11  
moisturize P. 12-13  
anti-ageing P. 14-17  
correct P. 18-19  
target P. 20-21  
renovate P. 22-23  
perfect the skin P. 24-25

### PRESTIGE CARE

Secrets de Sothys® P. 28-29

### PROSPA CONCEPT® BODY CARE

A new experience for the senses P. 32-33  
ocean sensations / vitality P. 34-35  
awakening of the senses P. 36-37  
return to source P. 38-39

### SUN CARE PRODUCTS

prepare-protect-repair P. 42-43

### NEW HIGHLY PERSONALISED MAKE-UP

sublime P. 46-51

### SKIN CARE FOR MEN

Sothys Homme P. 54-55

### BEAUTY GARDEN® BY SOTHYS

Reveal the best from nature... P. 56-59

## Your skin is an asset that deserves the best care possible

Sothys is a pioneering brand recommended by professionals in Institutes and Spas throughout the world (110 countries, 15,000 beauty centers). Sothys state-of-the-art Research and Development Laboratory is the guarantee of cosmetic quality (safety, comfort, effectiveness) that has resulted in the renowned quality of its products.

Sothys is ISO 9001 certified.





FACE CARE



## CLEANSE

Eliminating dead skin cells that accumulate every day on the surface of the epidermis prepares your skin to receive the appropriate skincare products and optimize absorption of the active ingredients. The first essential step towards beauty...

### MAKE-UP REMOVAL

Normal to combination skin  
**NORMALIZING BEAUTY MILK**  
 With grapefruit.  
 For resilient and soft skin.

**NORMALIZING LOTION**  
 With witch hazel, horsetail and cucumber,  
 alcohol-free.

**Oily skin**  
**PURIFYING MILK**  
 With camphor.  
 For clear and fresh skin.

**PURIFYING LOTION**  
 No alcohol or fragrances.  
 For a light complexion.

**Sensitive, dry and skins prone to redness**  
**SOFTENING BEAUTY MILK**  
 Unctuous and soothing, for a supple and  
 soft skin.

**SOFTENING LOTION**  
 Soothing, with natural extracts,  
 alcohol-free.

**All skin types**  
**BI-PHASED SOFT MAKE-UP  
 REMOVING FLUID EYES-LIPS**  
 Removes all make-up, including water-  
 proof products, from eyes and lips.  
 Ophthalmologically tested.

### CLEANSE

All skin types  
**MORNING CLEANSER**  
 An ultra-gentle, vitamin-containing  
 formula (sweet almond oil, shea butter,  
 camomile extract).

**Oily skin**  
**PURIFYING FOAMING GEL**  
 With propolis. For a purified complexion.

### DEEP CLEANSE

All skin types  
**DESQUACREM**  
 Clarifying and astringent active  
 ingredients to help eliminate persistent  
 impurities and for a radiant complexion.

**BIOLOGICAL SKIN PEELING**  
 With oat and beeswax extracts. For a skin  
 as smooth as silk.

## ESSENTIAL MASKS

### PURIFY AND SOFTEN

**ABSORBANT MASK**  
 A formulation enriched with absorbent  
 powders and menthol for a clear complexion  
 and clean, shine-free, healthy skin.

### SOOTHE

**IMMUNISCIENCE™ MASK**  
 A Fresh creamy mask.

### FOR A HYDRATED AND SUPPLE SKIN

**HYDROPTIMALE<sup>®</sup>TH13 MASK**  
 Moisture-queenching mask for an immediate  
 freshness effect and a hydration bath for your  
 skin.

### FOR THE BRIGHTNESS, SMOOTHING AND TENSOR EFFECT

**ANTI-AGEING DUO MASK**

- Smooth fine wrinkles.
- Immediate firming effect.
- Revitalize, restore radiance.

Mask made up of 2 products :  
 Phase 1 : Radiance smoothing mask  
 Phase 2 : Tightening mask.



# MAINTAIN

Everything has its particular nature... your skin has got its own characteristics. To help maintain its health for a long time, your skin needs an appropriated regular daily care.

## REGULATE

oily skin



### CORRECTING PROFESSIONAL TREATMENT

A multi-active care for problem skins: absorption of sebaceous impurities (tea tree oil) and intense exfoliation with salicylic acid. For a clear complexion, a fresh and healthy skin.

## HOME CARE

### HYDRA-MATT FLUID

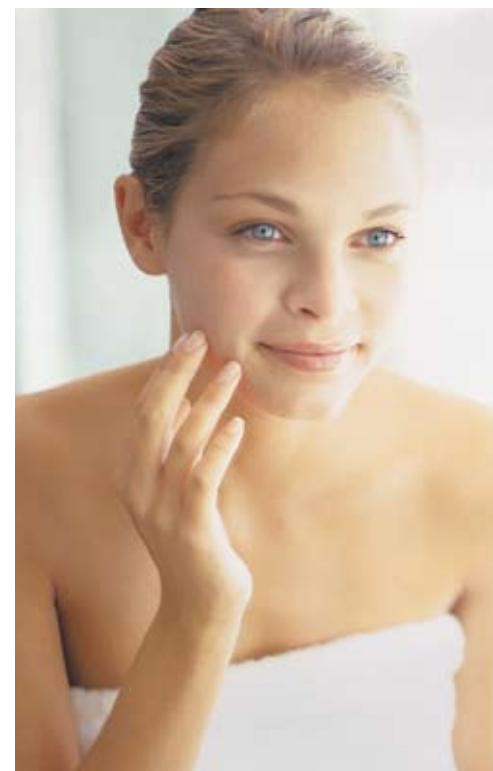
A biotechnological compound for this fresh and light gel to reduce shine, moisturize and protect.

### ACTIVE CREAM

Soft and soothing with liquorice extracts and biostimuline from sweet corn.

### PURIFYING SERUM

Purifying and stabilising. Apply locally on skin blemishes.



## SOOTHE

Sensitive skin

### IMMUNISCIENCE™ FLUID

Emergency care, with a light texture, specially designed for ultra-sensitive skins. Hypoallergenic\*.

### IMMUNISCIENCE™ CREAM

A formula with hydrating and soothing agents to protect the epidermis from the daily aggressions.

## LIGHTEN THE SKIN

Skin with fragile capillaries

### CLARTÉ & CONFORT LIGHT CREAM AND PROTECTIVE CREAM

Daily care to fight imbalances of skins with fragile capillaries. Regulate, soothe and protect fragile skins.

### CLARTÉ & CONFORT CONCENTRATED SERUM

A highly efficient concentrated formula. Contains natural polyphenols with proven properties of regulation, protection, and immediate soothing effect to diffuse redness skins.

## PROTECT

Normal to combination skin

### HYDRA-PROTECTIVE SOTHYS™ SOFTENING EMULSION

A free-flowing cream containing chaparral and powder for a matt skin, to protect and moisturize.

### HYDRA-PROTECTIVE SOTHYS™ CREAM

Protection and comfort from this cream containing chaparral and corn seed biostimulins.

## NOURISH

Dry skin

### NUTRITHYS® CREAM DRY SKIN

A protective and unctuous oil-in-water formula with (lupine extract).

### NUTRITHYS® CREAM ULTRA-DRY SKIN

Comfort, ultra nourishing and protective : rich in ceramides and sesame extract (to prevent dry, flaking skin).

### NUTRITHYS® NOURISHING SERUM

Contains plant oils and essential fatty acids for velvety and protected skin.

\* formulated to minimize allergic risks

You can feel it, your skin is visibly beautiful when it is perfectly hydrated.  
Do you know that its principal source of water is located in the centre of your own cells?  
With HYDROPTIMALE®<sup>THI3</sup>, Sothys revolutionizes the hydration concept and launches the first sensorial programme of 3 dimension intelligent hydration.



## MOISTURIZE → HYDROPTIMALE®<sup>THI3</sup>



### INTENSIVE TREATMENT HYDROPTIMALE®<sup>THI3</sup>

A 3 dimension High-Hydration treatment. The skin is once again soft and comfortable in a real moment of pleasure of your senses that alternates Digi-Esthétique® modelling and delightful products.

### HOME CARE

The essentials of a delightful and relaxing treatment in your bathroom.

#### HYDROPTIMALE®<sup>THI3</sup> INTENSIVE SERUM

A hydration concentrate to restore absolute comfort to the skin and an immediate hydration: up to 63% hydration\*.

Normal to combination skins

#### HYDROPTIMALE®<sup>THI3</sup> LIGHT CREAM

An ultra-fresh and melting texture on the skin for a delightful application.

Normal to dry skins

#### HYDROPTIMALE®<sup>THI3</sup> COMFORT CREAM

A smooth and comfortable skin that acts as a veritable hydrating envelope.





Your skin does not have the same age as you. The radiance, beauty and aspect of your skin does not necessarily reflect your real age because of external conditions and poor lifestyle habits that increase the appearance of the visible signs of cutaneous ageing. This is why the Sothys new anti-ageing programme was born : an exclusive concept relying on a professional diagnosis made by Sothys beauty therapists to determine the real age of the customer's skin (or grade of ageing), to offer an efficient, complete and totally customized anti-ageing solution.

## SMOOTH, REPLENISH OR RESTRUCTURE

### → [C] COLLAGÈNE HYALURONIQUE™



#### INTENSIVE TREATMENT

[C] COLLAGÈNE HYALURONIQUE™

Sothys creates the first customized anti-ageing Intensive Treatment, adapted to the real age of your skin. 1h15 of professional treatment with proven and long lasting\* efficiency, thanks to an exclusive technology allying cosmeceutical patent\*\* and a flax complex from Sothys Auriac Research.

#### INTENSIVE SERUM

ACTIVE INGREDIENTS IN THE INTENSIVE SERUMS EFFICIENTLY FIGHT THE AGEING PROCESS DUE TO THE EXTERNAL CONDITIONS.

The intensive serum targets the major anti-ageing problem for each grade.

#### ACTIVE CREAM

USED DAILY TO SLOW DOWN THE NATURAL AGEING PROCESSUS OF THE SKIN.

Everyday, the Active Cream protects the skin with an evolutionary 'active shield', visibly reducing creating an age defying answer adapted to each grade.

#### ADDITIONAL PRODUCTS

##### SHAPING NECK CARE

Sculpting neck treatment cream for the neck and decollette.

To refine and resculpt all skin types where there is a lack of firmness and elasticity.

##### NOCTUELLE™

Night cream with AHA's and vitamin C for all skins with wrinkles and fine lines.

For a velvet and smooth skin, a uniform and radiant complexion.



\* One month and more for 66 % of the people (test on 41 people who had received 3 treatments).

\*\* Patent pending France.

**GRADE 1**

**Visible signs: Fine wrinkles, temporary expression wrinkles.**



FIRST WRINKLES  
REVITALIZING  
SERUM  
GRADE 1



ANTI-AGEING  
CREAM  
GRADE 1

Objective

REVITALIZE

SMOOTH

Key active ingredients

H2CR® complex, sugar  
(cellular energy booster)

“Active anti-ageing  
shield Grade 1”  
Di-peptide + oat extract:  
for the smoothing action

Efficiency

The skin is revitalized,  
luminous, and smoothed.  
Average lifting improvement of 40%  
(technical expertise,  
testing 18 people for 30 days).

Day after day fine lines  
are smoothed,  
the skin is radiant.

**GRADE 2**

**Visible signs:  
permanent wrinkles.**



ANTI-WRINKLE  
LIFTING SERUM  
GRADE 2



ANTI-AGEING  
CREAM  
GRADE 2\*

Objective

FILL WRINKLES

ANTI-WRINKLE  
PRESERVE THE CONTOUR  
OF THE FACE

Key active ingredients

H2CR® complex, hyaluronic  
acid in solution  
(for an “injection-like” effect)

“Active anti-ageing shield  
grade 2”. Cyperus esculentus  
tuber extract for  
the anti-wrinkle action.

Efficiency

The wrinkles are visibly  
reduced, the skin keeps  
its tone and shape.  
Average decrease of wrinkles  
depth by 17% (Visioscan measure,  
test on 21 people for 30 days).

Day after day, the lines  
are smoothed, the wrinkles  
are softened. The contour  
of the face is preserved.

\* Available in comfort version for dry skins.

**GRADE 3**

**Visible signs:  
deep wrinkles,  
cutaneous slackening  
(loss of tone).**



ANTI-WRINKLE  
RESTRUCTURING  
SERUM  
GRADE 3



ANTI-AGEING  
CREAM  
GRADE 3\*

Objective

RE-ARCHITECTURE

ANTI-WRINKLE  
AND REMODELLING

Key active ingredients

H2CR® complex, dill extract  
(to facilitate the re-architecture of face)

“Active anti-ageing shield  
grade 3”. Proteins and peptides  
complex: target the collagen  
production for an anti-wrinkle  
and firmness effect.

Efficiency

The skin is resurfaced and firmer,  
the features are remodelled.  
Average firmness improvement  
of 20% (Cutomètre measuring,  
testing 18 people for 30 days)

Day after day, the skin  
is smoother and firmer.  
The wrinkles are as erased,  
the lines are remodelled.

**GRADE 4**

**Visible signs:  
advanced signs of ageing /  
loss of substance and brightness.**



REPLENISHING  
ANTI-AGEING  
SERUM  
GRADE 4



ANTI-AGEING  
GRADE 4

Objective

REPLENISH AGEING SKINS

REVEAL THE ESSENCE  
OF A YOUNGER SKIN

Key active ingredients

H2CR® complex  
Sothys flax complex enriched  
with nutri-peptides  
(essential cellular nutrition  
to regain youth and brightness).

“Active anti-ageing shield  
grade 4”. Lupine peptides:  
cell activator to reveal  
the overall beauty of the skin.

Efficiency

The skin is smoothed, firmer.  
Density and texture are restored.  
Self-evaluation:  
95% of participants said  
that their skin has found  
the essence of its youth.\*\*

The skin is smooth,  
firmer, regenerated.  
The skin becomes radiant  
and comfortable again.

\* Available in comfort version for dry skins.

\*\* satisfaction index, test on 24 people for 30 days.



With time the functioning of melanocyte-cells that are at the source of skin pigmentation can often mal-function. Only specific treatments can prevent and correct the appearance of pigmentation spots to get a uniform and translucent complexion. The [W.]™ Lightening Line is a complete programme for a double action: global lightening effect and dark spot corrector. Formulated around the [W.] complex of white tea, camomile and agarum, a powerful cocktail of lightening actives, it makes the complexion uniform, translucent and radiant.

## CORRECT → LIGHTENING LINE [W.]™

### DARK SPOTS AND COMPLEXION LIGHTENING



#### INTENSIVE TREATMENT [W.]™

A five-step treatment combining Digi-Esthétique method and the [W.]™ complex with white tea, camomile and brown algae. A privilege for the face and hands.

#### HOME CARES

##### DOUBLE LIGHTENING SERUM DARK SPOT CORRECTOR [W.]™

Soft exfoliation with « laser-like » effect to target the areas to be treated in the evening, global lightening care during the day.

##### FOAMING CLEANSING CREAM [W.]™

A foaming cleansing cream that removes make-up with wheat extracts.

##### LIGHTENING LOTION [W.]™

A toning up and freshening lotion with papaya / lemon exfoliating complex for a radiant complexion.

##### HYDRATING DAILY FLUID [W.]™

A light texture for this daily fluid with corngerm oil for a durable hydration.

##### LIGHTENING TOUCH-UP POWDER [W.]™

A light texture for this powder with a delicate fragrance for a matified and translucent complexion.



## TARGET → ACTIVE-CONTOUR™

Depending on your physical environment and the aggressions undergone by your skin, certain areas become fragile and require priority treatment.

### THE EYES

#### PROFESSIONAL CARE ACTIVE CONTOUR™

The global eye contour response is a leading edge technology between science and nature.

A treatment to soothe congested eyelids and smooth the eye contour, and leave you feeling relaxed and fresh.

→ Proven efficiency



### HOME CARE

#### ACTIVE-CONTOUR™ TENSOR GEL

A fresh and energizing gel, to revitalize the eye contour and decrease the look

#### ACTIVE-CONTOUR™ AGE-DEFYING CREAM

An intensive cream with high tech plant active ingredients for a skin that is revitalized and remodelled, with under-eye circles and wrinkles attenuated / reduced.

→ Proven efficiency

#### ACTIVE-CONTOUR™ DESTRESSING MASK

A translucent gel to remove bags under the eyes, whose freshness comes from cornflower, camomile, witch hazel and sage.

## TARGET → COMPLEMENTARY CARES

Seasonal changes, passing tiredness... your skin needs punctual and appropriated cares, in complement with your usual cares.

### IDEAL FOR VERY COLD WEATHER

#### RICH NOURISHING CREAM

A nourishing and moisturizing cream providing elevated comfort, rich in shea butter and beeswax.

### NEW-FOUND RADIANCE

#### PROFESSIONAL CARE FLASH BEAUTY

Anti-stress and radiant skin treatment, containing vitamin C.

Day after day the skin faces aggressions. The skin is resistant and repairs itself but can become unbalanced and no longer able to defend itself. The skin runs out of resources, loses its radiance and its youthful appearance.

Sothys has prepared an emergency programme to boost the pool of healthy skin cells. The exclusive Sothys H2CR® Cosmeceutical Complex has resulted from the latest scientific progress in the fields of genomics and antioxidants. It provides rapid response, supplying the skin with the means to function normally, effectively and for a long time.

## RENOVATE → [C] RENEWAL SYSTEM™

### FOR OVER-WORKED AND STRESSED SKINS

#### MICRO-DERMABRASION MASK

A combination of mechanical and chemical exfoliation to refine skin grain, smooth the epidermis, and impart new radiance to the complexion.

#### DOUBLE RENEWAL SYSTEM

##### Phase I :

Peeling composed of glycolic acid for a long-lasting exfoliating action.

##### Phase II :

Comfort solution with H2CR® Cosmeceutical Complex.

To eliminate toxins, repair and renew the skin texture while soothing. Non-comedogenic.

#### CONTINUOUS RENEWAL CARE

A real “cellular fitness” with the H2CR® Cosmeceutical Complex for complete renewal of the skin: skin shows the radiance and vitality of its youth, and is detoxified, repaired and re-textured. Non-comedogenic.





A visibly perfect skin... the ultimate sign of beauty.

A targeted treatment is necessary to obtain a smooth and uniform skin with refined skin grain. Sothys innovative research has resulted in a line of specific care products for skin care Institutes: **Pore refiner system** in order to meet consumer demands with a customized solution

## PERFECT THE SKIN → Pore refiner system

Pore refiner system works at the heart of the skin to boost the pool of healthy cells and bring out a perfect complexion by reducing enlarged pores.

### FOR RAPID ACTION

#### REFINING PEEL-OFF MASK

Its innovative texture rapidly eliminates impurities and tightens skin grain to bring out a lighter and fresher complexion.

The skin is softer, lighter and cleaner... instantaneously.

#### COMPLEXION PERFECTOR

A second skin effect with an ultra-soft touch to cover and reduce the appearance of pores, to matify the skin and to provide a perfect illuminator under make-up.

### FOR A TREATMENT EFFECT

#### MATIFYING REFINER SOLUTION

For skin with collapsed pores resulting from skin aging.

Its high-tech formula is concentrated in active substances to visibly tighten pores and smooth by a tensor effect and to boost radiance.

#### SMOOTHING REFINER SOLUTION

For skin with collapsed pores resulting from skin aging.

Its high-tech formula is concentrated in active substances to visibly tighten pores and smooth by a tensor effect and to boost radiance.





PRESTIGE CARE

With its new Secrets de Sothys® programme, Sothys expresses the quintessence of its know-how and its philosophy of beauty with an innovative concept. The impact of stress on premature skin ageing has proven that a skin protected from stress ages less rapidly. With this fundamental discovery, Sothys creates Secrets de Sothys®, a total face and body anti-ageing, de-stressing programme with textures to entice the pleasure of the senses... highly effective formulas containing Tex-OE®, a potent anti-stress ingredient. Secrets de Sothys® Soin excellence (Professional Treatment) features a combination of delicate textures and Digi-Esthetique® (Sothys exclusive modelling/ massage technique) that will leave you in a blissful state of absolute well-being. The skin is released from the effects of stress and its youth protected. This relaxing effect has been scientifically measured with Sensiometrie™, a Sothys exclusive quantifiable method.



With Secrets de Sothys® programme, Sothys embraces both body and spirit in a sensorial approach to slow the effects of time... perhaps even turn back the clock.



## SECRETS DE SOTHYS® SENSORIAL ANTI-AGE PROGRAMME FOR FACE AND BODY



### EXPERT PROFESSIONAL CARE

**SOIN EXCELLENCE SECRETS DE SOTHYS®**  
Everything you can see, touch, breath or hear is a source of well-being. A moment of emotional equilibrium: the Secrets de Sothys® Soin excellence, for the face and the body, is a journey of all your senses.... your skin is reborn, transformed with a new radiance.

→ Proven efficiency

### AT HOME

#### GLOBAL ANTI-AGE DE-STRESSING SERUM

The star of all anti-ageing serums!  
A divine texture containing the secret of youth... concentrated technology working against time. Day after day, your complexion illuminates, your skin is smoothed, regaining a velvety softness. Youthful energy wakes up in the skin resulting in a radiant glowing complexion.

→ Proven efficiency

#### INTENSE LIP CREAM

An intensive, active cream to protect, smooth, plump and shape the lip contour. A satin-soft smile on beautifully hydrated lips.

→ Proven efficiency

#### EYE CONTOUR SERUM

An intensive, total anti-ageing formula to treat puffy eyes, dark circles and wrinkles. A jewel for the eye contour.

→ Proven efficiency

#### GLOBAL ANTI-AGE DE-STRESSING CREAM

A delicately fragranced (day/ night) cream for the face of incomparable texture. The leading treatment cream of the Secrets de Sothys® care line in the fight against the manifestations of time. The most efficient ingredients have been selected to target the broadest concerns of ageing skins: anti-wrinkle, firming, hydrating, anti-pollution and protective.

→ Proven efficiency

#### SMOOTHING BODY BALM

A delicious body treatment cream for youthful skin from head to toe. Its anti-ageing active principles contribute to reinforce tissue cohesion for a firmer, smoother, revitalized epidermis. Skin is nourished and comfortable.

→ Proven efficiency

#### EAU DE PARFUM

With the unforgettable signature of her radiant aura by day and a glamorous mystique by night, a woman exudes her inner secrets... through this unique and elegant eau de parfum.

#### AGE-DEFYING HAND TREATMENT SPECIFIC AGE SPOTS

Designed as a genuine rejuvenation for your hands, its innovating formula combines anti-age action that increases skin density, targets spots, provides «second skin» protection and intense regeneration.



PROSPA CONCEPT®  
BODY CARE



## A NEW EXPERIENCE FOR THE SENSES

Sothys body cares offer a source of unique sensations and benefits. Care routines that transport and immerse you into a universe of delicately scented fragrances and soothing music. The epitome of pleasure, its focus your well-being and the beauty of your body.

*Velvet skin miracle, Orient essences ceremony, Dream of rain exfoliation...* so many experiences combining specific actives and exclusive hand movements in a sensorial environment.



### EXPERT PROFESSIONAL CARES

Relaxation, slimness, firming...your Sothys beautician will recommend you the care ritual adapted to your needs.

In order to reinforce the efficiency of each care, Sothys has elaborated the Body Digi-Esthétique® : expert gestures inspired from the best massage methods from the Orient and the Occident, an ode to wellness and to the body beautiful.

### A 3 PHASE EXPERIENCE

Your wellness the primary focus throughout a personalised care routine.

#### The awakening prélude

Relaxing massage movements progressively immerse you into an assuaging world of care.

#### The relaxing final stage

At the end of the care, a toning modelling awakens the senses, and returns you to a state of total well-being.

### AT HOME, DISCOVER FOR YOURSELF..

Sensorial moments of escapism and pleasure routines, with Sothys homeware body products, that enhance the benefits and efficiency of its expert professional cares...

...taking care of yourself is a pleasure. Rediscover your body. Calm your spirit. Sensual products with subtle, spicy and heady scents. Cocooning textures, fluid, smooth and delicate to touch. Absolute well-being.







Be immersed into a wave of toning benefits!  
Algae, trace elements, mineral salts, the sea is an inexhaustible source of active and reviving products.  
The Thalassothis® products bring you all these riches in ultra targeted formulas.

## OCEAN SENSATIONS AND VITALITY → THALASSOTHYS®

### HOME CARE

#### SLIM/FIRM

##### TOTAL RESCULPTING SERUM

A new generation serum whose effective and long-lasting action is suitable for all types of cellulite.

→ Proven results and lasting effects after the end of the treatment.

##### ANTI-EAU BODY CONCENTRATE

A complex that activates microcirculation and reduces water retention. Your legs are lighter and more tonic.

→ Proven efficiency

##### FIRMING SUBLIME CREAM

An intensive care enriched in restructuring actives that contribute to restore skin's elasticity and its firmness thanks to actives that stimulate the collagen synthesis. Anti-stretch marks action. A luscious texture, a pleasure renewed everyday as skin is visibly more and more firm.

→ Proven efficiency

##### RADIANCE TIGHTENING BUST SERUM

A "lifting effect" care containing smoothing actives. It acts by firming the tissues and regenerating the skin for a radiant and toned cleavage thanks to its pearlescent particles. Contains an active ingredient to smoothe out stretch marks.

→ Proven efficiency

### SLIMNESS EXFOLIANT

Exfoliant designed to stimulate the micro-circulation, smooth and prepare the skin to receive the active ingredients.

### SOFTEN

#### SOFT PEELING

Your skin is smoother and softer.

#### HYDRA-NOURISHING BODY LOTION

Pleasant and light, its texture provides an intense hydration.

Your skin is smoother, more supple, and protected.

### POST-DEPILATORY

#### POST-DEPILATORY SOFTENING CARE

A formula with active ingredients selected to act at the heart of the hair regrowth process. Your skin is clear for longer, and your legs soft.

#### GLITTERING POST-DEPILATORY CARE

Its iridescent gel texture softens the skin and illuminates the legs. Its plant and marine complex inhibit hair re-growth process. Legs are clear and sublime.



Heady scents, delicate textures. The pleasure envelopes you little by little. Containing 100% natural active ingredients, essential oils are well known for its exceptional effects on the body and the spirit. With the Aroma-Sothys range, discover their beneficial virtues.

## AWAKENING OF THE SENSES

### → AROMA-SOTHYS®

#### HOME CARE

##### AROMATIC SHOWER

A cleansing amber gel with spicy hints that leaves the skin soft and delicately scented.

##### MASSAGE ELIXIR

A cocktail with Marula oils, ginger, nutmeg, orange and mandarin essential oils to give the skin a satin-like gloss and to awaken the senses. A dry oil, perfect for a modelling.

##### DELICIOUS SCRUB

A sensuous texture, with spices, ginger, nutmeg, orange and mandarin essential oils, which soften and delicately perfume the skin.

#### ENERGIZING SHOWER

With Eucalyptus, cardamom, nutmeg, and neroli essential oils for a radiant and tonic skin.

#### SATIN ELIXIR WITH ASIAN ESSENCES

A beauty elixir for the body with bewitching aromatics of Asia with a silky soft finish, gently perfuming the skin.

As a partner of Thermes de Spa, Sothys offers the only programme to utilise the renowned Eau Thermale Spa™, whose benefits are universally recognised throughout the world. In perfect affinity with the skin, it stimulates the cellular functions, quenches and stimulates the epidermis for a softer skin.



## A RETURN TO SOURCE → EAU THERMALE SPA™

### HOME CARE

#### VELVET CLEANSING WATER

Ophthalmologically tested formula. Face and eyes are gently cleansed in one exquisitely soft gesture.

#### INSTANT RADIANCE SMOOTHING CARE

Smooths skin and diminishes wrinkles and imperfections (beech bud and soft almond extracts). Favours application and long-lasting effect of make-up.

#### RADIANT INSTANT AMPOULES

An ideal booster for the evening.

### DAILY THERMAL CARE

A face cream with a velvet texture for a moisturized and protected skin and a radiant complexion.

#### SOFTENING BODY GEL

A luscious and fresh texture which brings softness and radiance to your skin.

#### VELVET HAND CREAM

A light and unctuous cream, rich in Eau Thermale Spa™. Ultra-protective, it nourishes the hands and nails, and softens the skin for optimal smoothness.



A woman with her hair pulled back, wearing a black bikini, is sitting on a wooden lounge chair. She is looking off to the side with a slight smile. The background shows a blurred outdoor setting with a building and trees. The text "SUN CARE PRODUCTS" is overlaid on the right side of the image.

SUN CARE PRODUCTS

To ensure we can sunbathe in comfort and with peace of mind, Sothys has created a new generation of sun care : the exclusive association of Cellu-guard® and jasmine flavonols provides both dual tissue protection and triple cellular protection while also enhancing the natural protection system of the skin against free radicals.

And Sothys goes even further, by creating light and delicately scented sensory textures, to give exceptional well-being. The pleasure of the senses, UVA / UVB protection... **Control the sun, enhance the pleasure !**

## PREPARE / PROTECT / REPAIR → NEW GENERATION CELLU-GUARD® SUN CARE

### SUNLESS TANNING

**PROGRESSIVE SUNNY GLOW LOTION**  
A 2-in-1 face and body care product whose moderate content of tanning agents enables daily use for a good look all year round.

### FACE AND BODY SELF-TANNING CREAM

Its non-tinted cream formula gives a natural, sublime and longlasting tan to the skin.

### PROTECTION

**SUN-SENSITIVE AREAS CARE - HIGH PROTECTION SPF 30**  
A care that protects from free radicals and photo-ageing during intense sunlight exposure. Hypoallergenic\* and fragrance free, it is particularly suitable for sensitive skin.

**TANNING BODY LOTION - MEDIUM PROTECTION SPF 20**  
A soft and light milk for a pleasant tan and ultra-effective protection. A multi-advantage formula : water-resistant, sweat-resistant, oil-free.

**AGE-DEFYING TINTED CARE - LOW PROTECTION SPF 10**  
Its formula carefully protects the skin from ageing and helps it retain its suppleness. Its tinted texture gives a sublime tanning effect upon application. To be used as daily protection from the first rays of summer sun. (oil-free).

**BRONZE ENHANCER FACE AND BODY LOW PROTECTION SPF 10**  
This silky protecting care contains a tan booster to accelerate and intensify the tan.

**IRIDESCENT TANNING GEL - LOW PROTECTION SPF 8**  
A unique protective gel thanks to its tan boosting active ingredients that help to intensify and accelerate a natural-looking tan. A magical iridescent texture for a golden and sparkling tan.

### SOOTHE

**REPAIRING AGE-DEFYING FACE CARE**  
An intensive care formula to protect and repair the skin against the aggression from free-radicals. A care that allows the skin to stay firm, radiant and well hydrated. A care that can also be used as a night cream when following daily sun exposure.

**SOOTHING AFTER-SUN BODY CARE**  
A refreshing fluid which softens the skin immediately after exposure through its soothing active ingredients. Through its care actives, it prevents photo-induced ageing, and hydrates the skin to restore it to its full radiance.



\* Formulated to minimize the risk of allergy



NEW HIGHLY  
PERSONALISED MAKE-UP

# SUBLIME →

When they designed the new highly personalised make-up care range the Sothys researchers and colour specialists were thinking about YOU.

Because today's trends afford so many styles and looks, one golden rule must remain constant: to be in harmony with yourself, whatever the fashion.

To reveal and make the most of your natural beauty, Sothys has developed a new approach to colour that takes into account; your general style, complexion, and the colour of your eyes and hair.

After diagnosis and with the advice of your beautician, you will discover those harmonies that will compose your new highly personalised make-up palette.

And because your skin is also unique, the Sothys make-up contains active multi-action skin-care ingredients created especially for you and that complement your daily Sothys skin care programme.

A VISION OF COLOUR, YOUR COLOURS, IN PERFECT HARMONY...



LIGHT TYPOLOGY



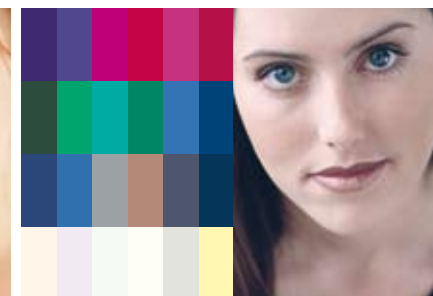
DEEP TYPOLOGY



WARM TYPOLOGY



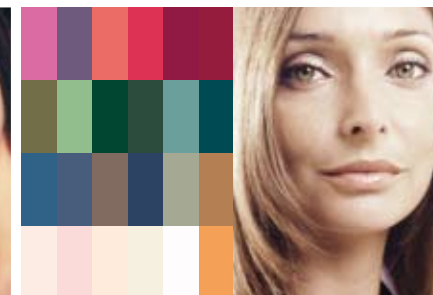
COOL TYPOLOGY



BRIGHT TYPOLOGY



MUTED TYPOLOGY



To choose the Sothys skin-care colours that suit you, ask advice from your beautician, who will carry out your highly personalised make-up diagnosis.



## EYES

### TWO WAY EYE-SHADOW

A half cream-half powder texture that can be used dry or moist.

**Effects : moisturising, long-lasting.**



### NEW LOOK EYESHADOW

A « second-skin » formula, ultra-light, with pure colours and an instant metallic effect.



### EYEBROW ENHANCING PENCIL

A soft long-lasting texture.

**Effet : non-drying.**



### CONTOUR CONCEALER BASE

Innovation magic with this product to reduce under-eye shadows and reveal their sparkle.

**Effects : smoothing, firming.**

### SPARKLING DUO EYE AND BROW PENCIL

A soft texture for precision eye or brow contouring resulting in a perfect make up lasting all day long.

**Effect : soft and long lasting.**



### VOLUME CARE MASCARA

A treatment mascara to add texture and volume for a personalised effect.

**Effect : protection and lash enhancement.**

Ophthalmologically tested.



### WATERPROOF CARE MASCARA

A treatment formula that adds volume while remaining water resistant. Great for the swimming pool or when emotions are high.

**Effect : protection. Ophthalmologically tested.**

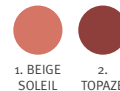


## LIPS

### MATT LIPSTICK

A powdered finish slightly perfumed with vanilla, long-lasting comfort.

**Effect : softening.**



### LIP CARE PENCIL

A velvet texture for a perfect long lasting result.

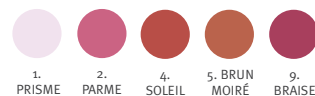
**Benefit : non drying.**



### RADIANCE GLOSS

Non-sticky extreme brilliance.

**Action : comfort.**



### HYDRA-GLIDE LIPSTICK

A long-lasting formula, that glides on to give absolute comfort.

**Effects : moisturising, anti-pollution.**







## FOUNDATION

### LONG-LASTING SHEER BLUSH

A velvet and subtle feel to give a long-lasting effect.

**Effects :** protective, shine-free.



### RADIANCE LOOSE POWDER

A gentle dusting for a smooth, natural, perfectly unified complexion that will last all evening.

**Effects :** shine-free, light, sebum-absorbing action.

Compact version available.

### VELVET BRONZING POWDER

Light Caressing, guaranteed healthy look.

**Effets :** smoothing, light, protection.



### INTENSE VELVET BRONZING POWDER

More tanned effect.



### LIFT DEFENSE® FOUNDATION

The high technology foundation with a melting texture for a double firming/protection effect, proven results.

Immediate firming effect : +19%\*.

**Effects :** anti-ageing, smoothing, protective.



### OXYLIANCET™ FOUNDATION

A radiant effect that is 100% matt to give a magical texture that changes from a cream to a powder.

**Effects :** brightening, shine-free, anti-pollution.



### SMOOTHING COMPACT FOUNDATION

An adaptable velvety texture for an instant make-up.

**Effects :** smoothing, comfort.



## NAILS

### FOUNDATION

#### HYDROPTIMALE®THI3 FOUNDATION

A fondant tinted and hydrating texture for a sublime effect of light and a natural make-up.



#### REDNESS CONCEALER

A melting creamy texture to hide any red areas.

**Effects:** concealing, gives even colour.

#### CORRECTING CONCEALING TREATMENT

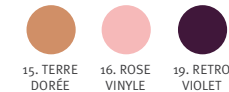
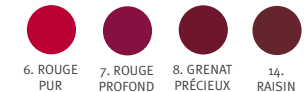
A powdery texture to cover small skin blemishes.

**Effects :** concealing, gives even colour, conditioner.

#### PROTECTIVE NAIL ENAMEL

A long-lasting nail-care formula, to give extremely shiny nails.

**Effects:** strengthens, hardens, nourishes.



#### MULTI-ACTION NAIL ENAMEL

A 3-in-1 formula that can be used as a base coat, fixing coat or clear varnish.

**Effects:** protective, long-lasting.



SKIN CARE FOR MEN

# SOTHYS HOMME

The new Phytomalt (re)generation line : a high technology line designed for the specific needs of male skin.



## INTENSIVE TREATMENT DETOXIFYING-DE-STRESSING

One hour of relaxation to reduce nervous tension, stimulate the mind, detoxify the skin. Modelling phases with Digi-Esthetique® alternate with the application of multiple benefit active ingredients (hydrating, toning, anti-wrinkle, anti-pollution) : a guarantee of well-being !

## HOME CARE PROGRAMME

### 3-STEP REGENERATION

#### 1. CLEANSERS

##### DETOXIFYING ACTIVE CLEANSER

The daily cleansing care to favour the elimination of impurities and prepare the skin for shaving.

##### EXFOLIATING SCRUB

A desincrusting care to clean the pores and eliminate roughness. Its exfoliating micro-grains polish the surface of the epidermis. The skin is clear, revived like new. Shaving is facilitated.

##### REVITALISING HAIR AND BODY CARE

A 2 in 1 formula, that is quick and simple to use. Softly cleanses the skin and the hair.

#### 2. ACTIVE CARES

##### HYDRATING ACTIVE CARE

A light and non-oily fluid that provides the skin with the hydration it requires to regain or maintain comfort and suppleness.

→ Proven efficiency



#### AGE-DEFYING ACTIVE CARE

This protective anti-ageing care reduces lines and wrinkles. It contains micro-encapsulated retinol to prevent the appearance of new wrinkles. Can be applied directly after shaving.

→ Proven efficiency

#### 3. TARGETED CARES

##### DE-STRESSING EYE CARE

This refreshing fluid is a complete care with a triple anti-wrinkle, anti-dark circles, anti-puffiness action. Smooths the eye contour, gives radiance and tonus. Fragrance and colour free, ophthalmologically tested.

##### MATIFYING T-ZONE FLUID

This light textured fluid is rapidly absorbed for an immediate and long-lasting anti-shine action on oily areas (T-zone: forehead, nose, chin).

→ Proven efficiency

##### SOOTHING AFTER-SHAVE BALM

An active care that immediately soothes and brings comfort and well-being to the skin. Contains wheat germ cephalines to aid skin reparation.

→ Proven efficiency



## NATURE, AN INSPIRATION FOR BEAUTY

"Let me make a confession : for many years I devoted all my energy to the development of Sothys "the signature of excellence in professional skin care" in Tokyo, New York or Singapore. However, my thoughts were never far from Auriac, with its rich, green garden deep in the heart of the Corrèze. It is a magical place, away from the madness of this century always gives me a sense of peace.

It is not easy to reach this place, far from everything and yet close to God, as would the elders say. Up in the incredible plateau of Xaintrie, on the edge of the Gorges de Dordogne and the Auvergne, one can feel the power of nature wholly preserved.

Thus, by a lake I created a Botanic arboretum "Les Jardins de Sothys™" which is an exceptional site full of discoveries and reveries open to all. But to go further, for those who want to feel all the incredible benefits of nature at home, I wanted to launch a new line of natural cosmetics : Beauty Garden® by Sothys."

Bernard Mas,  
Founder and Chairman  
of the Supervisory Board of Sothys.

# BEAUTY GARDEN® BY SOTHYS



REVEAL THE BEST  
FROM NATURE





## SYMBOL OF LIVING NATURE, LES JARDINS SOTHYS™ INSPIRE EVEN FURTHER RESEARCH

“Les Jardins Sothys™” have inspired a base of fundamental research, and implemented a partnership with the University of Limoges in order to study local flora for its potential use in Sothys cosmetics exclusively.

Research at Les Jardins Sothys™ has already unveiled the unique hydrating active **VMA™ (Vegetal Moisturizing Activator™)**

Featured in the products from the Beauty Garden® by Sothys line.

The skin is protected by an hydrating mantle that it is necessary to safeguard against environmental aggressors and premature ageing. VMA™ is at the heart of an active complex including three powerful hydrating components : extracts of cherry buds, angelica and hawthorn combined with vegetal glycerin to protect the skin and prevent dehydration.



## THE BEAUTY GARDEN® BY SOTHYS PROGRAMME

### IN THE CABIN

#### New professional facial care

A care session starts with makeup removal (Makeup Removal Fluid + Floral Water), followed by Helianthus and Walnut Shells Exfoliant. This is followed by modeling with face and body modeling oil and then Peel-off Mask with rice. The session ends with the application of Helianthus and Rosemary facial care. 50 minutes of relaxation in cabins for a soft and radiant skin!

#### New professional body care

The session is flexible and involves:

- scrubbing alone: mixture of modeling oil and scrubbing powder with powdered apricot pits
- modeling alone with modeling oil
- or complete scrubbing + modeling care

#### Make-up removing fluid with cherry bud

This fluid and light emulsion smoothly cleanses the skin, leaving skin supple and clean with an exquisite feeling of freshness. Tested under ophthalmologic control.

#### Flower water with angelica and hawthorn

This soft and fresh lotion is ideal to balance the skin after the cleansing or mask phase. Tested under ophthalmologic control.

#### Face care with helianthus and rosemary

A gentle skin care cream with a texture that instantly melts into the skin. It provides softness and radiance to normal to combination skin and leaves the skin glowing with vitality. By protecting the skin, it helps to delay the onset of the first signs of ageing.

#### Helianthus and walnut shells exfoliant

Exfoliation with walnut shells to gently eliminate dead cells, refine skin grain and reveal the radiance of the complexion. A genuine care product combining gentle application and efficacy.

#### Nourishing body oil with helianthus

Pure organic helianthus oil enriched with anti-oxidizing vitamin E to bring intense softness and nutrition to the skin and prevent the ageing process. Its delicately perfumed “dry oil” texture is ideal to practice a modelling at home leaving the skin soft and satiny.

#### Body lotion with cherry bud and lavender

A fresh texture for a smooth and hydrated skin. This unctuous milk envelops the skin with a veil delicately scented with lavender oil.

